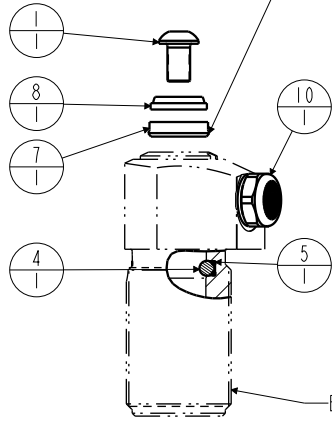
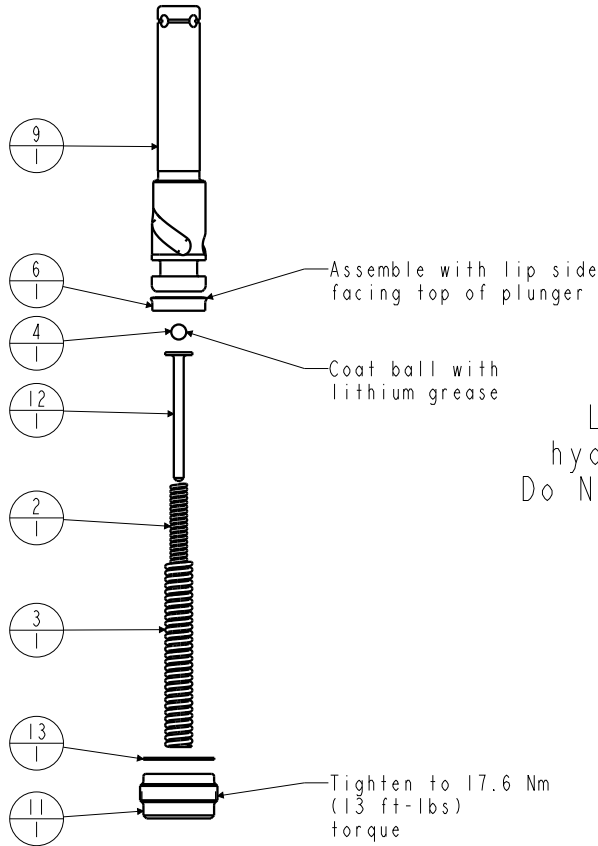


N/A	N/A	46100006	KIT, SPRING	N/A	N/A	NOTED
N/A	N/A	6V150105	KIT, SEAL, FKM	N/A	NOTED	N/A
N/A	N/A	46000006	KIT, SEAL, STANDARD	NOTED	N/A	N/A
13	1	39T55001	GASKET, (-113)	X	X	X
12	1	81590501	ROD, SUPPORT, SPRING, SC, 450			
11	1	81530500	RETAINER, SC, 450			
10	1	49001904	BREATHER, 1/8 BSPP			
9	1	47510500	PLUNGER, SC, 2.0 kN			
8	1	39053004	WIPER, SNAP-IN, (7/16)	X	X	
7	1	39010038	SEAL, BEVEL, 7/16 x 3/32 x 5/8	X	39052014	
6	1	39010036	SEAL, BEVEL, 3/8 x 3/32 x 9/16	X	39052010	
5	1	39000032	O-RING, (.070 x .040)	X	39051020	
4	2	23600014	BALL, STEEL, ALLOY, .156	X	X	X
3	1	23311017	SPRING, COMPRESSION			X
2	1	23310008	SPRING, COMPRESSION			X
1	1	21500008	SCREW, CAP, BTNH, M6 X 10, ALY			
No.	QTY	PART No.	DESCRIPTION	Standard Seal Kit	FKM Seal Kit	Spring Kit

Assemble with lip side facing bottom of body



Body - Not Replaceable



Assemble with lip side facing top of plunger

Coat ball with lithium grease

Tighten to 17.6 Nm (13 ft-lbs) torque

Lubricate all seals with clean hydraulic fluid prior to assembly.
Do Not Use Silicone Based Lubricants.



PARTS LIST



VEKTEK, INC.
1334 E. SIXTH AVE. P.O. BOX 625
EMPORIA, KS. 66801 U.S.A.

ASSEMBLIES AFFECTED
41-5002-11
41-5002-12
41-5002-15

PARTS LIST, ASSY, SC, TB, 2KN, SA, VersoCam

SIZE
A

MPL1510

REV
M

SHEET 1 OF 1

FORM FEG035_PL_ASIZE, REV. B

M	3911	RELEASE	JDW	09/19/19
REV	IN ACCORDANCE WITH ECN	EFFECTIVE DATE	REVISED BY	DATE
DRW BY:	BUSH	DRAWING STATUS: Released		
DATE:	12/13/94	PRODUCTION APPROVED FOR RELEASED STATUS ONLY		